



MARIÁNSKÉ
LÁZNĚ

MARIÁNSKÉ LÁZNĚ

🇬🇧 Pocket guide

- Basic information
- Trips around
- Town center map



www.marianskelazne.cz

Marienbad, it means beautiful parks, amazing architecture, nature everywhere around you, the wide range of funny activities and also the famous history. Enjoy the beauty of spa town full of healing mineral water springs and original atmosphere of historical spa from the end of 19th century, which was loved during whole its existence by many famous guests, artists, scientists and even rulers from whole the world.



MARIENBAD IS...

- The second largest spa resort of the Czech Republic with 13 500 inhabitants.
- The town situated at an altitude of over 600 m with a unique mountain climate.
- The town built on extensive swamps in 1808, which was declared as public baths in 1818.
- Founders of Marienbad: abbot Karel Kaspar Reitenberger, physician Jan Josef Nehr and gardener Vaclav Skalník.
- The town, where you can find more than 40 mineral water springs just inside the town area and 100 more in the vicinity.
- The town that is one of the sixteen European spa towns that seek to enter the UNESCO World Heritage List.
- Architectural jewel, where neo-classicism, neo-baroque, or Art Nouveau elements can be found next to Neo-Renaissance architecture.
- Spa town that has been visited by such famous personalities as Johann Wolfgang Goethe, English King Edward VII., emperor Franz Joseph I., Fryderyk Chopin, Gustav Mahler, Friedrich Nietzsche, Franz Kafka, Rudyard Kipling, Mark Twain, Thomas Alva Edison, Pierre de Coubertin and many others.
- The town with the longest colonnade of Czech Republic and Singing Fountain.
- Hometown of Westbohemian Symphonic Orchestra, the oldest symphonic orchestra of Czech lands and one of the oldest of whole Central Europe.
- Town, where you can play golf on Royal Golf Playcourt – the oldest one in the Czech Republic.

„I traveled all over India, Ceylon, all the spa towns of Europe, but nowhere in whole the World my heart wasn't caught by the poetry of beautiful nature as much as here in Marienbad.“

Edward VII, King of England

POPULAR SPOTS

Singing Fountain ¹⁰

49.9765914N, 12.7061642E | www.marianskelazne.cz

The singing fountain was built between 1982 and 1986 according to the design of the academic architect Pavel Mikšík. The author of the first musical composition „Music for the Fountain“ was Czech composer Petr Hapka. The Singing Fountain plays daily from 7:00 to 7:00 pm every odd hour, special shows at 21:00 and 22:00 are including beautiful colorful illumination. The opening ceremony is on April 30 and the season ends at the turn of October and November.

Main Colonnade ¹¹

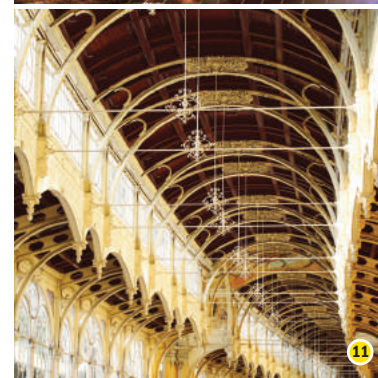
49.9773350N, 12.7066111E | www.marianskelazne.cz

The Colonnade of Maxim Gorky is a neo-Baroque building, built between 1888 and 1889. It was ordered by Abbot of the Teplá monastery and built by the local builder Johann Koenig according to the projects of Viennese architects Miksch and Niedzielsky. Colonnade is made of cast iron construction manufactured in the Blansko Machineries and its dimensions make it the longest building of this type in whole the Czech Republic.

Bohemium Miniatur Park ¹

49.9710153N, 12.7206156E | www.parkbohemium.cz

In the natural scenery of the beautiful park, there are sixty perfect models of significant building and technical monuments of the Czech Republic. Karlštejn Castle, Ještěd Lookout Tower, Červená Lhota Castle or the Lužná Railway Museum - all in one place.







The most important water springs

Cross Spring (Křížový pramen) ¹²

49.9779856N, 12.7066075E

The spring is used for diseases of the digestive tract and for allergic diseases related to digestive disorders. Strongly mineralized with laxative effect.

Ferdinand's Spring (Ferdinandův pramen) ²

49.9623200N, 12.7072600E

It is suitable for the treatment of diseases of digestive tract and metabolism. Significantly salty taste, strongly mineralized.

Springs of Ambroz (Ambrožovy prameny) ⁴

49.9748000N, 12.7078000E

A poorly mineralized source with high iron content, used for healing of some forms of anemia and in the treatment of urological diseases.

Karolina's spring (Karolinin pramen) ⁹

49.9756447N, 12.7073169E

This spring contains more magnesium and is used in for healing of urological diseases and kidney stones.

Forest Spring (Lesní pramen) ³

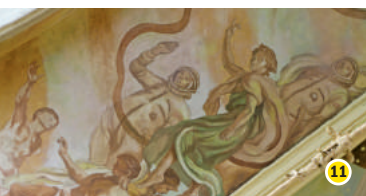
49.9794747N, 12.7006378E

Suitable for treating various diseases of the digestive tract, upper respiratory tract, or for treating certain urological diseases.

Rudolph's Spring (Rudolfův pramen) ⁹ ⁴

49.9754367N, 12.7068742E

The natural mineral water with a high calcium content, has anti-inflammatory effects and is used in case of kidney and urinary tract diseases.



DID YOU KNOW...?

- The frescoes on the ceiling of the colonnade ¹¹ were created by the academic painter Josef Vyletal during the reconstruction in 1979 and you can even find a couple of flying cosmonauts there.
- In 1904, British King Edward VII. met with the Austrian Emperor Franz Joseph I. in Marienbad. This event is commemorated by the **Sculpture of the Monarchs** ¹.
- Ambroz's Springs ⁴ are named „Springs of love“ – according to the legend after drinking girls were blushing and boys became younger.

Religious places

The Church of Saint Mary Assumption ⁸

Goethovo nám. 110/31 | www.farnostml.cz

The Roman Catholic Dean's Church was built in 1844-1848 in a historic New-Byzantine style.

Orthodox Church of Saint Vladimir ⁵

Ruská 347/9 | kostelml.cz

The interior is decorated with beautiful ikonostas, created in Kuznecov for Worlds Exhibition in Paris in 1900.

Evangelic Church ⁶

Mírové nám. 90/7

Was built for evangelical spa guests in 1853-1857 and was paid from the public collection of Evangelicals with the contribution of Prussian King Friedrich William IV.

Anglican Church ⁷

Ruská 98/5

The Anglican Church is the work of the London architect William Burges, whose plans were realized by the local builder Friedrich Zickler in 1879.

LOVE WALKING THROUGH BEAUTIFUL NATURE?

- Hamelika Tower** ¹⁶, 20 m high lookout tower which recalls romantic ruins. It's situated at an altitude of 722 m on the top of Hamelika hill.
- Mecský's viewpoint** is located on a platform above the boulder nearby the Royal Hotel and offers probably the most beautiful view of the old town.
- Ferdinand's Colonnade** ² is situated in Úšovický Park. You can find here the oldest mineral water spring, named after Czech king Ferdinand I.
- Jewish cemetery** is hidden nearby the road to Velká Hleďsebe. It was founded in 1875 and you can find here a grave of prof. Dr. Theodor Lessing, German philosopher and anti-fascist, murdered by Nazis in Marienbad in 1933.
- Geological Park**, it's nature trail focused on geology and geobotany. Almost 1,5 km of forest footpaths with examples of different types of rocks, typical for the area of Slavkovský Les.
- Queen Karola's viewpoint** - beautiful lookout pavilion built in 1875 on a slope between Forest Spring and Town Cemetery.



DID YOU KNOW...?

- There was a **Synagogue** in Marienbad? It was situated on the Main Street, but in 1938 it was destroyed by Nazis unfortunately.
- Johann Wolfgang Goethe** visited Marienbad three times? In 1823 he met young Ulrika von Leventzow here and fell in love with her. He was accommodated in House called „Golden Grape“, where you can find the Town Museum ⁸ these days.
- While in 1868 the foundation stone of the National Theater was laid in Prague, Marienbad was just opening its **own theater** ¹¹.

Museums

Town Museum ⁸

Goethovo náměstí 11 | www.muzeum-ml.cz

The Town Museum is situated in the oldest originally preserved house of historical spa zone. You can find here expositions about history of Marienbad and the region, J. W. Goethe or balneology, and every month also temporary exhibitions.

Fryderyk Chopin Memorial ⁹

Hlavní 47 | www.chopinfestival.cz

Fryderyk Chopin Memorial is situated in the second floor of Chopin House, where the famous composer was accommodated during his stay in Marienbad. You can find here exhibits and information about Chopin's life, his visit of Czech lands or about Wodzinsky's family.

The Slavkovsky Les House of Nature ¹⁰

Kladská 9 | www.dumprirody.cz

The Slavkovsky Les House of Nature situated in the heart of Kladská Natural Reservation offers interesting information about local nature and its rarities.

Culture

Westbohemian Symphonic Orchestra

Hlavní 47 | zso.cz

Westbohemian Symphonic Orchestra was founded in 1821, so it's connected with the spa from the beginning. WSO organizes regular Friday concerts at the Casino House ³, and during the season you can also enjoy concerts on the Colonnade.

The Town Theatre ¹¹

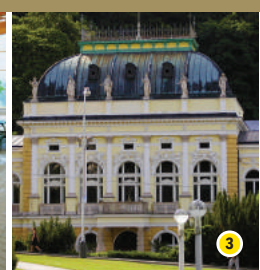
Trébizského 106/1 | www.kisml.cz

The Town Theatre has almost 150 years long tradition. It's offering the opportunity to meet theatre ensembles and actors, but also master musicians from Czech Republic and abroad.

Kino Slavia ¹²

Nerudova 437/2 | www.kinoslavia.cz

The cinema has been extensively modernized, so you can enjoy movie blockbusters in 3D or older classics with the brilliant sound of Dolby Surround 7.1.



👤 (Not only) for children

Natural playground in Prelat Park ⁽¹³⁾

49.9587561N, 12.7171436E | www.smsml.cz

„Playful spring“ is the best place where to spend some time with family. You can try the monkey track or some of climbers, make a bonfire or simply taste Prelate's Spring.

Cabin cableway ⁽¹⁴⁾

49.9738247N, 12.7136389E | www.snowhill.cz/marianky/

Cableway operates whole the year – during the winter season it's most used by skiers, during the summer you can use it on your way to Bohemianum and other attractions situated on Krakonos hill.

Public Swimming Pool ⁽¹⁵⁾

Tyršova 617/6 | www.smsml.cz

The indoorswimmingpool includes a 25-meter long swimming pool and also a children's pool. Moreover, you can use the heater, hot tub, hairdresser, massage and bar.

Tourist mini-train ⁽¹⁷⁾

Masarykova 626/1 | www.autobusy-kv.cz

Sightseeing train tours are available from spring season to autumn. The beginning of route is nearby the Cup Vital Travel Agency, where you can also purchase the tickets. All the route takes approx. 30 minutes.

Koupaliště Lido ⁽¹⁸⁾

Na Vyhliďce 56/10, Hamříky | www.badlido.com

The swimming area is located in the middle of a forest about 2 km from the town center. There is a boat, paddle and badminton rental, volleyball courts, etc.

ANNUAL EVENTS

- **The opening ceremony of Singing Fountain**, waking up after the winter break, is organized every year at the same time - 30.4. from 21:00.
- **Opening of spa season**, the traditional celebration with extensive program and consecration of water springs, takes place at the second weekend in May.
- **Jazz Spa**, the International music festival that brings jazz concerts to the Main Colonnade, is held in June. www.jazzove-lazne.cz
- **Chopin Festival**, an internationally acclaimed festival of classical music, is taking place in August.
- **Marienbad Film Festival**, taking place at the end of summer, is intended for movie lovers but both for the general public. www.marienbadfilmfestival.com
- **Autumn in Marienbad** is an event that lights up the whole town with dancing and singing. Come to join us for the third weekend in September.
- **Christmas Market** - the second advent weekend brings Christmas atmosphere, tradition and culture to the Main Colonnade.

SIGHTSEEING WALK

1.2 km | approx 1 hou

- | | |
|--------------------------|-----------------------------------|
| 1 Sculpture of Monarchs | 7 Goethe's Square |
| 2 Nové Lázně Hotel | 8 Church of Saint Mary Assumption |
| 3 Casino Community House | 9 Karolina's Colonnade |
| 4 Springs of Ambroz | 10 Singing Fountain |
| 5 Central Spa | 11 Neo-baroque Colonnade |
| 6 Maria Spa | 12 Cross Spring Pavilion |

Download the SmartGuide app to your smartphone and take a sightseeing walk with our map and guests recommendation. App starts itself automatically every time you approach some interesting spot. Have all the information you need about Marienbad simply available. After installation it works without Internet connection too.



📍 Around Marienbad

Kladská Natural Reservation ⁽¹⁰⁾

50.0257197N, 12.6691858E

Less than nine kilometers from Marienbad you can find one of the most beautiful places of the whole region, pond and hunting lodge called Kladská and situated in the middle of most valuable part of Slavkovský Les Natural Protected Area. Don't miss 1,5 km long nature trail leading through romantic forests and peat bogs of Kladské rašeliny Natural Reservation.

Chateau Kynžvart ⁽¹⁹⁾

Zámek 347, 354 91 Lázně Kynžvart | www.zamek-kynzvart.eu

Beautiful classicist styled summer chateau built by Austrian chancellor von Metternich is located about 2 km below the Kynžvart town in the middle of one of the largest English parks in Czech Republic. The interiors hide many different historical treasures, including rare collections and one of the most valuable libraries in Czechia.

Premostratensian Monastery Teplá ⁽²⁰⁾

Teplá 1, 364 61 Teplá | www.klastertepla.cz

The Premonstratensian Monastery in Teplá was founded in 1193 by the Czech aristocrat known as Blessed Hroznata. The present form is the result of late Baroque rebuilding made at the turn of the 17th and 18th centuries. Don't miss a tour of the library, exhibits of the collections or the newly reconstructed southern part of Monastery called „Hroznata's academy“.



• Plzeň 75,9 km	• Norimberk 183 km	• Berlín 410 km
• Praha 171 km	• Mnichov 268 km	• Vídeň 498 km
• Brno 373 km	• Frankfurt 395 km	• Budapešť 570 km

Tourist Infocentre ⁽⁹⁾

Hlavní 47/28, Dům Chopin, Mariánské Lázně, 353 01

info@marianskelazne.cz | +420 354 622 474 | www.kisml.cz

Opening hours:

March – October daily 9:00 – 19:00

November – February daily 9:00 – 18:00

Services: guiding services, ticket office, souvenir shop, accomodation, tax free refund

Transport

Public transport is operated by trolleybuses and buses. You can pay the ticket in cash at the driver or cashless with card in terminal. The cash register accepts coins only (1, 2, 5, 10, 20 a 50 CZK) and does not refund the overpayment.

	Cash at the driver	With card in terminal
One – journey fare	20,-	12,-
Children 6 – 15 yrs	10,-	6,-
Baggage, dog, ski	10,-	6,-

Find more information about public transport fares and timetables at www.mdml.cz

Parking

The cheapest parking is available in Parkhouse in the town centre. Parking space is guarded. Price: 20 CZK per 1 hour or 120 CZK per one day

More information: www.zaparkujauto.cz

Accommodation

We are happy to help you find your accommodation. Call +420 354 622 474 or use our reservation portal: www.marianskelazne.cz/ubytovani.

Did you find some outdated information or you miss something important in this little pocket guide? Contact us: info@marianskelazne.cz

Vydalo: Infocentrum města Mariánské Lázně | KIS Mariánské Lázně s.r.o.,
Hlavní 47/28, Dům Chopin, Mariánské Lázně, 353 01 v roce 2017

Foto: Z. Král, V. Simeonová, A. Píptová, J. Vohnout, O. Staněk, K. Nykles, L. Podhorský, P. Lněnička, J. Jonák,
použité fotografie pocházejí z webu www.kvpoint.cz - databanky fotografií Karlovarského kraje.

Zpracoval: Jakub Vohnout Překlad: Veronika Kejřová

Tento projekt je realizován za finanční podpory Karlovarského kraje.

